

# Year 11 Parental Engagement: English



2018/19

[c.bartlett@oldburyacademy.org.uk](mailto:c.bartlett@oldburyacademy.org.uk)

# AQA GCSE English Language

**Paper 1 50%**

**Paper 2 50%**

**Component  
3- Spoken  
Language  
0%**

**Section A:**  
Reading  
one literature  
fiction text

**Section B:**  
Writing  
descriptive or  
narrative writing

**Section A:**  
*Reading  
one non-fiction  
text and one  
literary non-  
fiction text*

**Section B:**  
writing to  
present a  
viewpoint

**Total exam time:  
1 hour and 45 minutes**

**Total exam time:  
1 hour and 45 minutes**

# AQA GCSE English Literature

**Paper 1 40%**

**Paper 2 60%**

**Section A:**  
Shakespeare  
*'Romeo and Juliet'*

**Section B:**  
19<sup>th</sup> Cent Prose  
*'A Christmas Carol'* or *'Dr Jekyll and Mr Hyde'*

**Section A:**  
Modern Texts  
*'An Inspector Calls'*

**Section B:**  
Anthology poetry.  
*'Power and Conflict'* cluster

**Section C:**  
Unseen Poetry

**Total exam time:**  
**1 hour and 45 minutes**

**Total exam time:**  
**2 hours and 15 minutes**

# How can you help your child in English Literature?

- PDF versions of ALL following texts can be found on the shared area and show my homework. (C.Blakemore)

## Possible Questions/Tasks that will help your child:

1. Use Post its to create a quote wall for each literature text. Link to the main characters and themes.
2. Summarise the key events at the start, middle and end of the text and explain WHY the author used this structure.
3. As a modern reader how do you react to the key themes and character presentations.

It is possible to purchase revision guides for these texts.

We highly recommend CGP they can be purchased from WHSMITHS, WATERSTONES and The Works or online <https://www.cgpbooks.co.uk>

- Litcharts: <http://www.litcharts.com/> (There is also a free mobile app)
- BBC Bitesize: <http://www.bbc.co.uk/education/subjects/zr9d7ty>
- PIXL LIT APP
- <https://www.aqa.org.uk/subjects/english/gcse/english-literature-8702>

# An Inspector Calls

by J. B. Priestley

[Upgrade to A\\*](#)

Introduction    Plot Summary    **Detailed Summary & Analysis**    Themes    Quotes    Characters    Symbols    Theme Wheel

[Previous Summary](#)    **An Inspector Calls Act 1**    [Next Act 2](#)

*Summary & Analysis*

[Themes and Colors Key](#)

### Summary

The scene is set in the dining- room of a house that belongs to a fairly wealthy manufacturer. The house is described as

### Analysis

The appearance and quality of the Birlings' dining- room suggests that they are a family of wealth and class.

**Download this Chart (PDF)**

# How can you help your child in English Language?

Please encourage your child to read as much as possible:  
Fiction books, magazines, letters, diaries, reports, articles and travel journals.

## Section A Reading

**Useful Questions for you to ask are:**

- 1. What words/ phrases stand out to you? Why?**
- 2. Summarise the point of the text. Do you agree with the writer's message?**
- 3. How does the writer want you to feel after reading this?**

BBC Bitesize: <http://www.bbc.co.uk/education/subjects/zr9d7ty>

AQA Website: <https://www.aqa.org.uk/subjects/english/gcse/english-language-8700>

Youtube: Mr Bruff <https://www.youtube.com/watch?v=SLryfCtvgJw>

AQA Revision Guides

- <https://www.cgpbooks.co.uk>
- <https://www.pearsonschoolsandfecolleges.co.uk/secondary/Revision/AQA/English/aqa-gcse-english-revision.aspx>



# Section B Writing – Cultural Capital



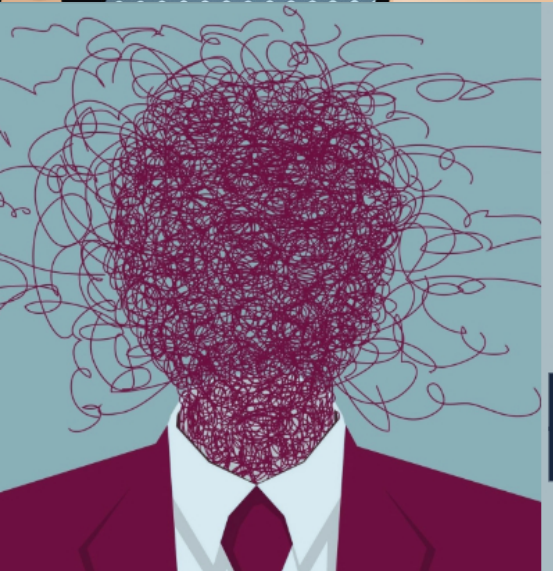
'GOSSIP IS A DANGEROUS WEAPON, ESPECIALLY IN SCHOOLS. WHISPERS, RUMOURS & GROUP-CHATS CONTROL HOW PEOPLE FEEL MORE THAN YOU'D IMAGINE...'

WRITE AN ARTICLE FOR YOUR SCHOOL WEBSITE GIVING YOUR VIEWS.



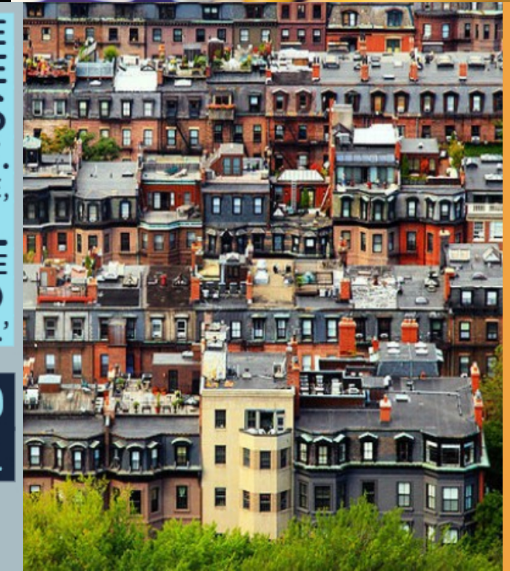
'BEING OVERWEIGHT IS UNACCEPTABLE. FAT IS THE PHYSICAL MANIFESTATION OF GLUTTONY. YOU ARE RESPONSIBLE FOR YOUR BODY & LIFESTYLE CHOICES.'

WRITE AN ARTICLE FOR YOUR SCHOOL'S WEBSITE GIVING YOUR VIEWS.



'MENTAL HEALTH IS THE NUMBER ONE ISSUE FACING TEENS GROWING UP TODAY. REGARDLESS OF THE EXPENSE, EVERY SCHOOL SHOULD EMPLOY A FULL-TIME MEDICALLY-TRAINED PROFESSIONAL COUNCILOR.'

WRITE A LETTER TO YOUR HEAD TEACHER OFFERING YOUR VIEWS.



'YOUR NEIGHBOURHOOD DEFINES YOU. YOU MIGHT AS WELL HAVE YOUR POSTCODE STAMPED LIKE A BARCODE ON THE BACK OF YOUR NECK.'

WRITE A SPEECH TO YOUR FELLOW PUPILS GIVING YOUR VIEWS.

# Key Dates 2018/19

## Exams:

Language Paper 1 4<sup>th</sup>  
June

Language Paper 2 7<sup>th</sup>  
June

Literature Paper 1  
15<sup>th</sup> June

Literature Paper 2  
23<sup>rd</sup> June

## Mock Exam Dates:

Week Commencing: 19<sup>th</sup>  
November

Paper 1 & Paper 2 Language  
Week Commencing: 11<sup>th</sup> March (2  
weeks)

Paper 1 & Paper 2 Language  
Paper 1 & Paper 2 Literature