



'LIFE AFTER LEVELS'

Why are we changing our assessment and gradings?

- Old KS3 levels already withdrawn by DfE
- New GCSE Grading structure (1-9), will start to apply to current Y7, 8, 9, etc from September 2015.
- Grade 5 will be equated to current grade C initially.
- New GCSE Grades will be phased in nationally alongside existing A*-G Grades

OLDBURY ACADEMY

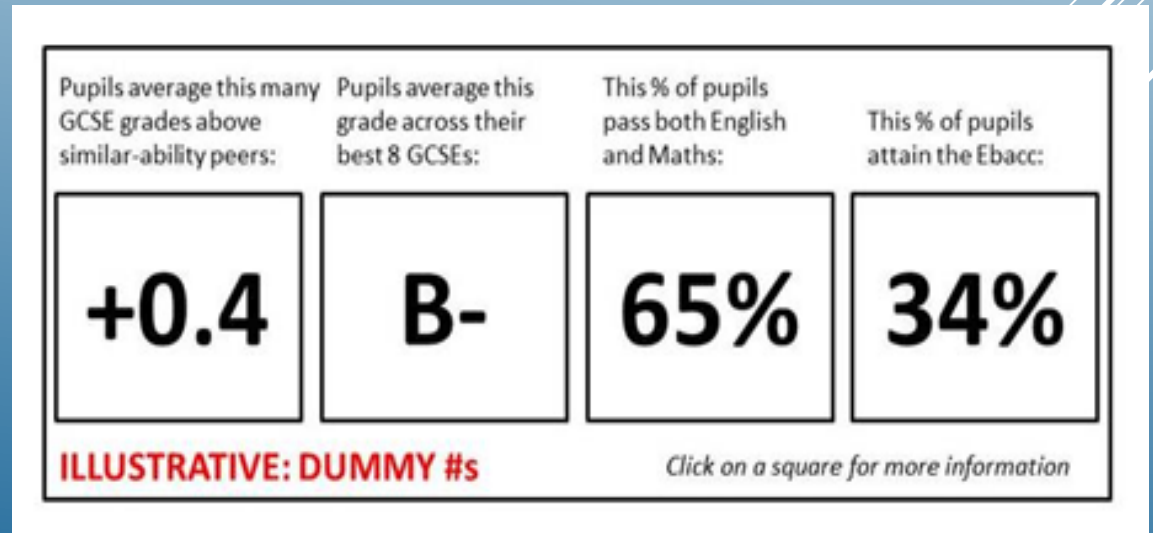
'LIFE AFTER LEVELS'

What will schools be measured on

Headline figures

1. Progress 8
2. Attainment 8
3. The percentage achieving Grade 5-9 in English & maths
4. The percentage of students achieving the English Baccalaureate

- New tables scheduled for the 2016 exams



Box 1
English Maths

- English
- English Literature
- Maths
- Further Maths

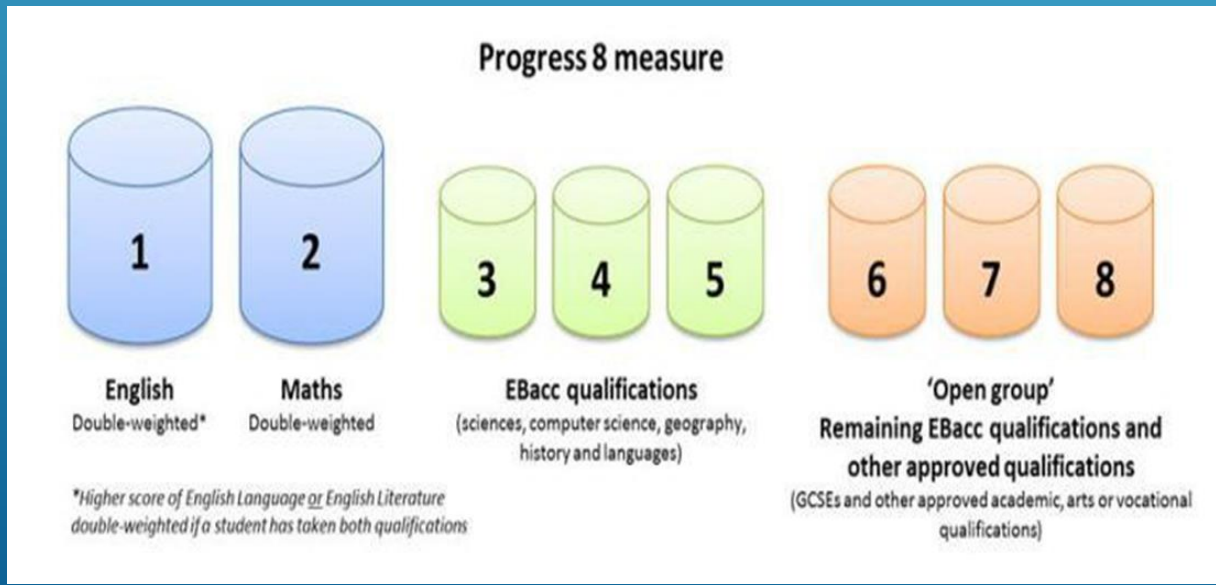
Box 2
Ebacc

- Core Science
- Additional Science
- Biology
- Chemistry
- Physics
- Computer Science
- History
- Geography
- MFL
- Ancient foreign languages

Box 3
Open

- Other GCSE's
- Technical Awards

P
R
O
G
R
E
S
S
8



'LIFE AFTER LEVELS'

How does Progress 8 get calculated?

$$\text{Student Progress 8} = \frac{\text{Sum of all students A8} - \text{Sum of all students expected A8}}{10}$$

$$\text{Cohort Progress 8} = \frac{\text{Sum of all student individual P8}}{\text{Number of students in cohort}}$$

OLDBURY ACADEMY

'LIFE AFTER LEVELS'

Our Approach

- We will track pupils across five years using uniform approach of GCSE numbered grades across all five years.
- Use rigorous assessments standardised across each subject, matched to GCSE criteria across all five years.
- Provide timely (early) intervention where required.

OLDBURY ACADEMY

'LIFE AFTER LEVELS'

When will each subject be affected by the new GCSEs?

Phase 1 – Maths and English (current Y10 - GCSE to be taken 2017)

Phase 2 – Sciences, History, Geography, Languages, Art and Design, Music, Drama, Dance, Citizenship, Computer Science, Physical Education and Religious Studies (current Y9 - GCSE 2018).

Phase 3 – Other subjects inc: Design & Technology, Urdu, Statistics, Business Studies, Polish, Engineering (Current Y8 – GCSE 2019)

OLDBURY ACADEMY

'LIFE AFTER LEVELS'

How we will set your child's targets for the NEW GCSE's?

- ▶ GCSE Targets will be set using pupils' Key Stage 2 Data.
- ▶ A combination of English and Maths KS2 data will be averaged into a decimalised number then used to enter the pupil into a 'flight path' throughout their secondary school learning.
- ▶ Final year of reporting 'levels' at the end of KS2
- ▶ Y6 students 'assessed without levels' and progress is judged against age-related expectations. Students to be 'secondary ready' by the end of KS2.

Table B.1 2014 Attainment 8 estimates for each KS2 fine level

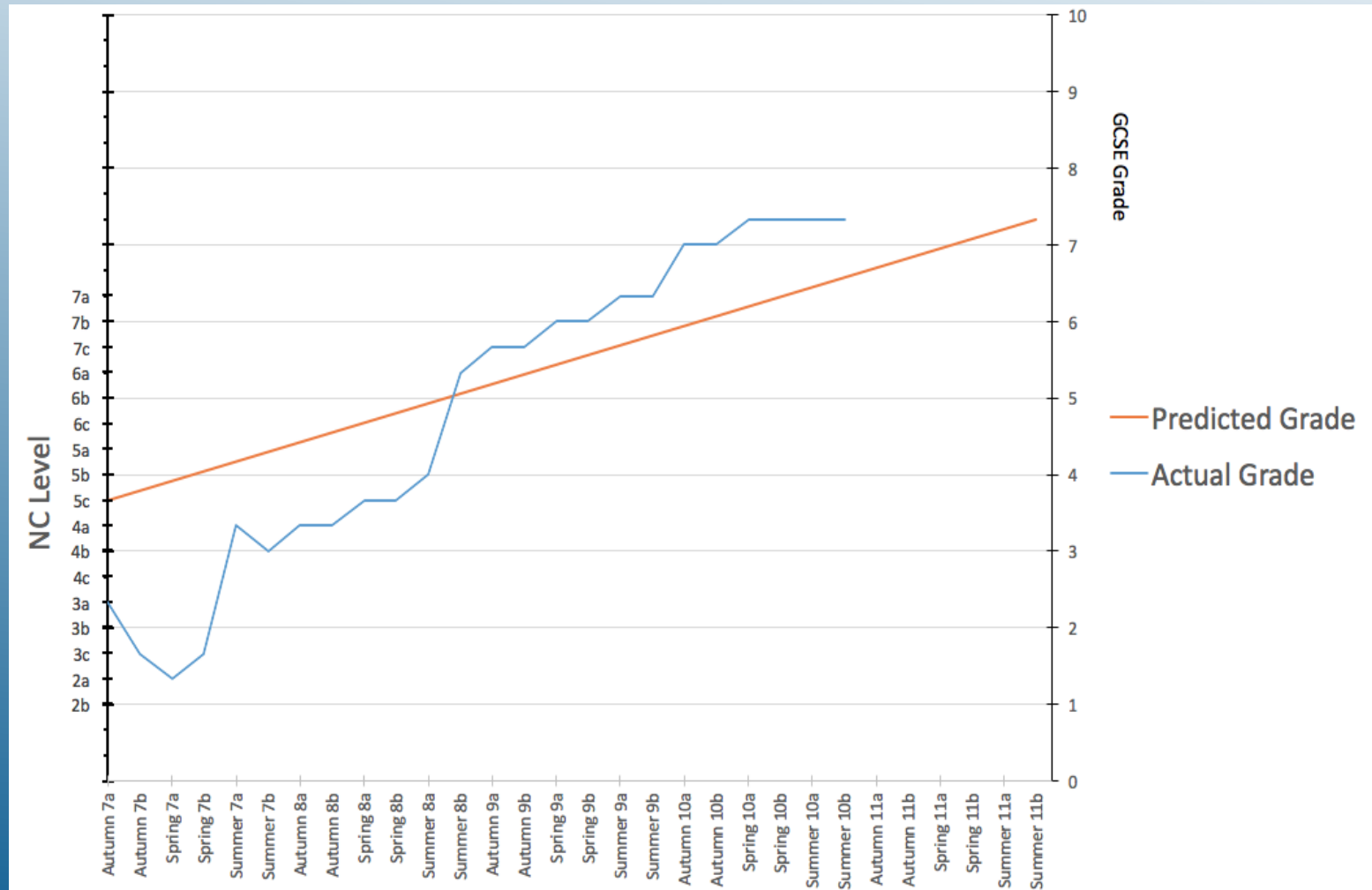
KS2 average fine level (English & Maths)	2014 Attainment 8 estimate	KS2 average fine level (English & Maths)	2014 Attainment 8 estimate	KS2 average fine level (English & Maths)	2014 Attainment 8 estimate
1.5 ^a	14.94	3.7	31.75	4.9	55.11
2.0 ^b	18.06	3.8	33.02	5.0	57.33
2.5 ^c	19.13	3.9	34.71	5.1	59.72
2.8 ^d	20.88	4.0	36.55	5.2	62.02
2.9	21.78	4.1	38.48	5.3	64.46
3.0	23.12	4.2	40.42	5.4	66.97
3.1	23.38	4.3	42.26	5.5	69.72
3.2	24.98	4.4	44.41	5.6	72.49
3.3	26.04	4.5	46.37	5.7	74.71
3.4	26.98	4.6	48.52	5.8 ^e	76.32
3.5	28.39	4.7	50.67		
3.6	29.95	4.8	52.84		

OLDBURY ACADEMY

'LIFE AFTER LEVELS'

Target Setting

- Pupils will follow a 5-year Flight Path Model from Year 7.
- Pupils will know their End of Y11 target and End of current year target to achieve this.
- Targets will be based on new GCSE Grades numbered 1-9.



Old KS3 Levels	New GCSE Level		Old GCSE Levels
	9	+	<i>A* Grade</i>
		=	
		-	
	8	+	<i>A Grade</i>
		=	
		-	
	7	+	<i>B Grade</i>
		=	
		-	
	6	+	<i>C Grade</i>
		=	
		-	
8A	5	+	<i>D Grade</i>
8B		=	
8C		-	
7A	4	+	<i>E Grade</i>
7B		=	
7C		-	
6A	3	+	<i>F Grade</i>
6B		=	
6C		-	
5A	2	+	<i>G Grade</i>
5B		=	
5C		-	
4B - 4A	1	+	<i>Working Towards</i>
3A - 4C		=	
3C - 3B		-	
2B - 2A	Working Towards	+	<i>Working Towards</i>
1A - 2C		=	
1C - 1B		-	

KS4 CHANGES...THE ERA OF P8/A8

2014

Wolf Review implemented
First entry only counted for performance tables

2015

Some schools opt for Progress 8

2016

1-8 Scale used for Attainment 8 / Progress 8
New KS2 assessments (September 2016 Y7)

2017

First reformed GCSEs taken (English and mathematics)
1-9 Scale used for new GCSEs

2018

More reformed GCSEs

2021

Pupils with new KS2 assessment from 2016 are now Y11

Progress Report				
	Currently Working At	On Pathway?	Current Term Target	End of Year Target
Art	5-	Above Pathway	4+	5=
Dance	5-	Above Pathway	4+	5=
Drama	4+	On Pathway	4+	5=
English	5+	Above Pathway	4+	5=
Geography	4=	Below Pathway	4+	5=
History	5=	Above Pathway	4+	5=
ICT	4+	On Pathway	4+	5=
Mathematics	3+	Below Pathway	4+	5=
MFL	3=	On Pathway	3=	4+
Physical Ed.	4=	Above Pathway	4-	5-
Religious Ed.	5-	Above Pathway	4+	5=
Science	4+	On Pathway	4+	5=
Technology	4-	Below Pathway	4+	5=

Targets:

These are the targets the school expects the student to achieve by the end of the current term and year if they are progressing in line with like students nationally.

OLDBURY ACADEMY

'LIFE AFTER LEVELS'

Reporting to Parents

Attendance (05/09/2016 – 15/09/2016)			
Possible Sessions	12	Percentage Attendance	100.0%
Authorised Absence	0	Unauthorised Absences	0

Attendance:

The current attendance of the pupil up to the date started.